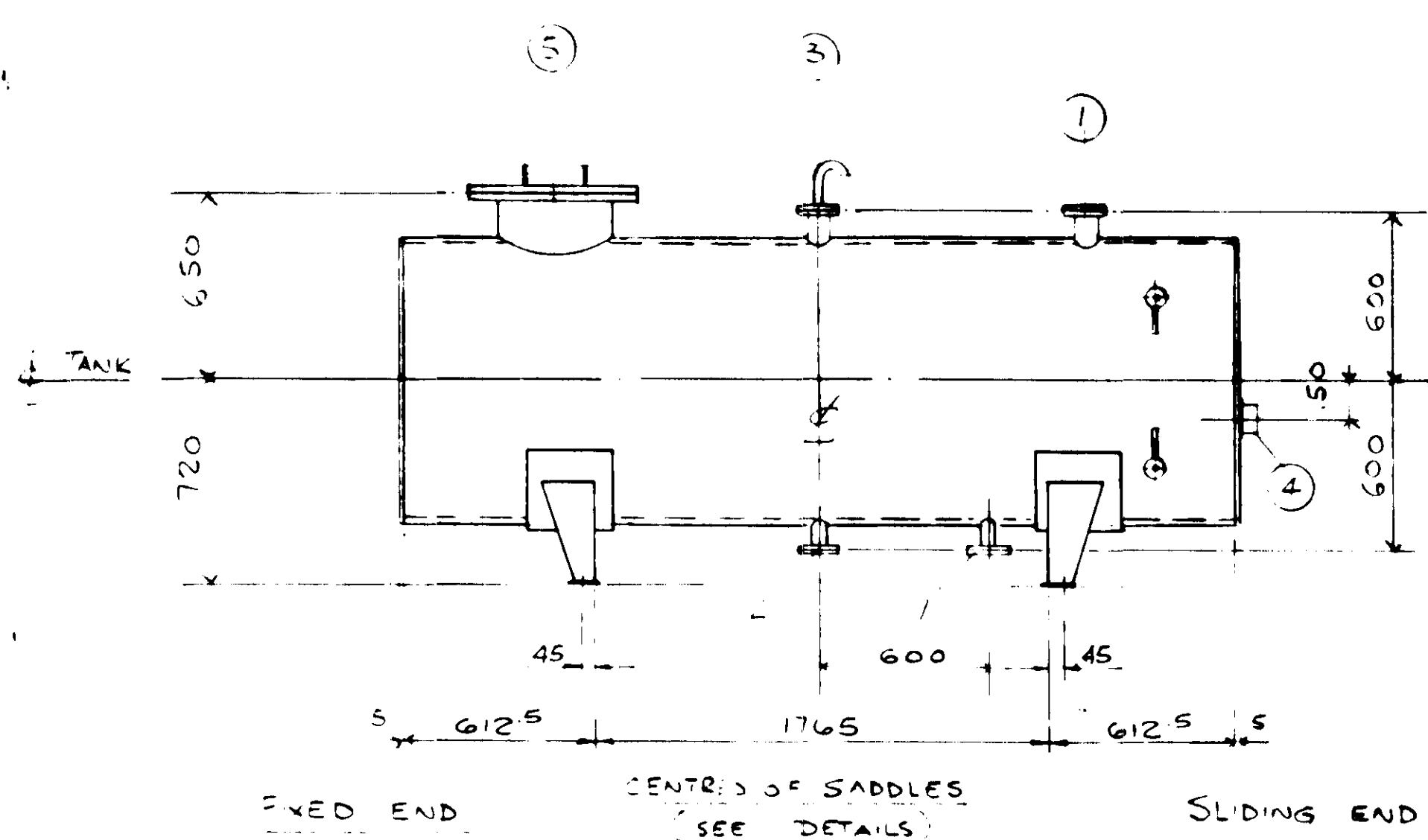


PLAN

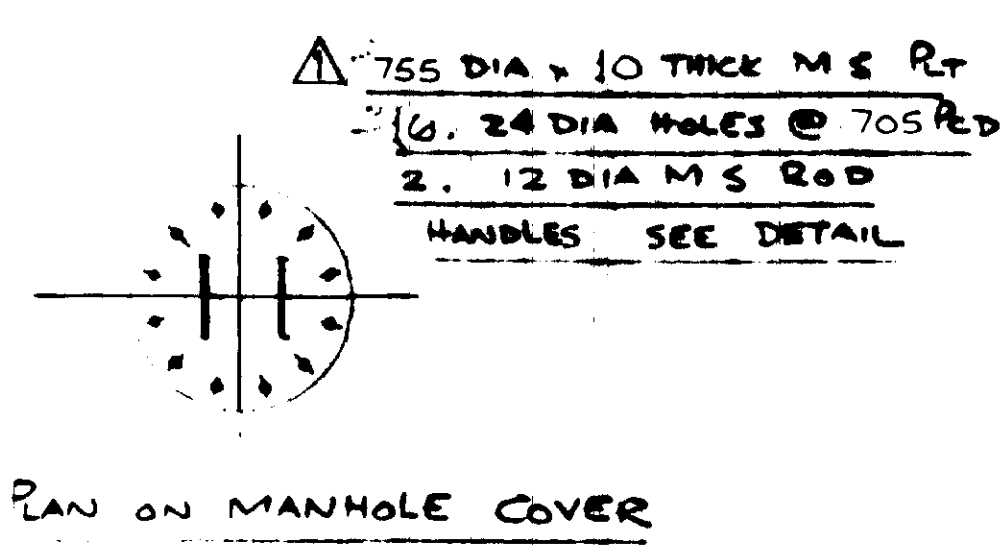


ELEVATION

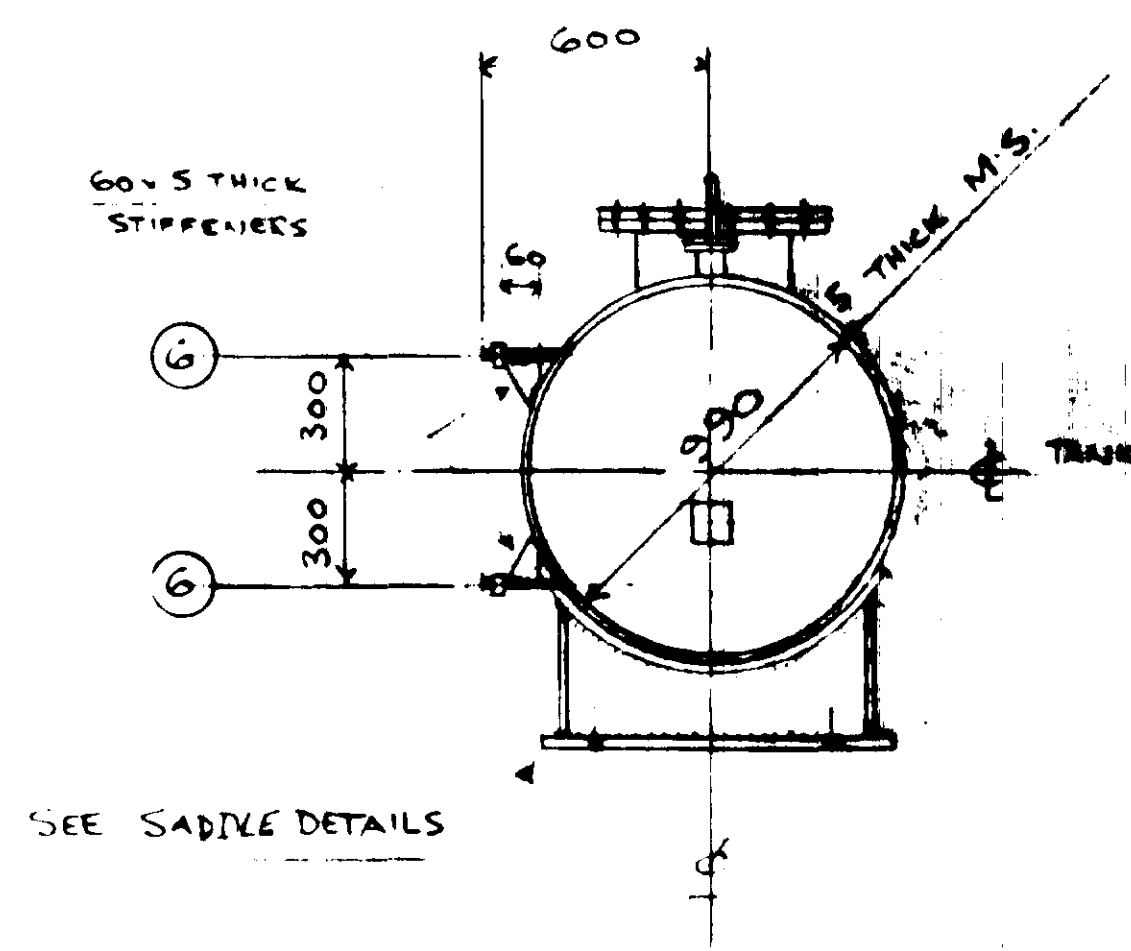
Nº REQD : 1 OFF TANK - AS DRAWN (FOR UNIT 3 GAS TURBINE) &  
1 OFF TANK - OPPOSITE HAND (FOR UNIT 4 GAS TURBINE).

ALL MATERIAL TO BS 4360 GRADE 43A  
WEIGHT OF TANK : 700 KGS.

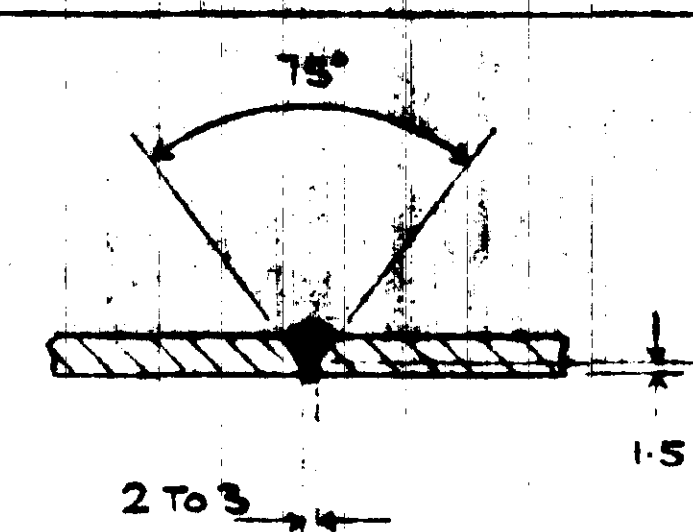
MANHOLE COVER  
LIFTING HANDLES  
Nº 2 REQUIRED AS DRAWN



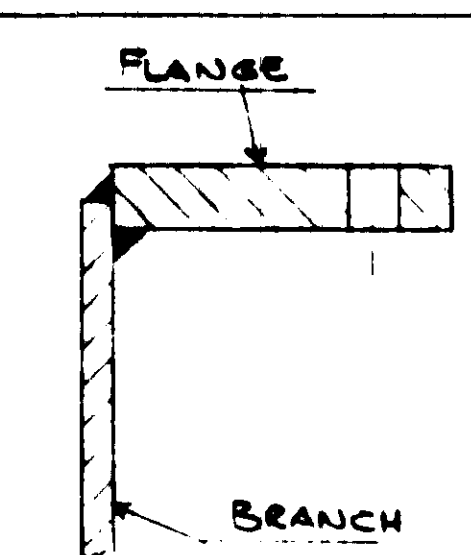
PLAN ON MANHOLE COVER



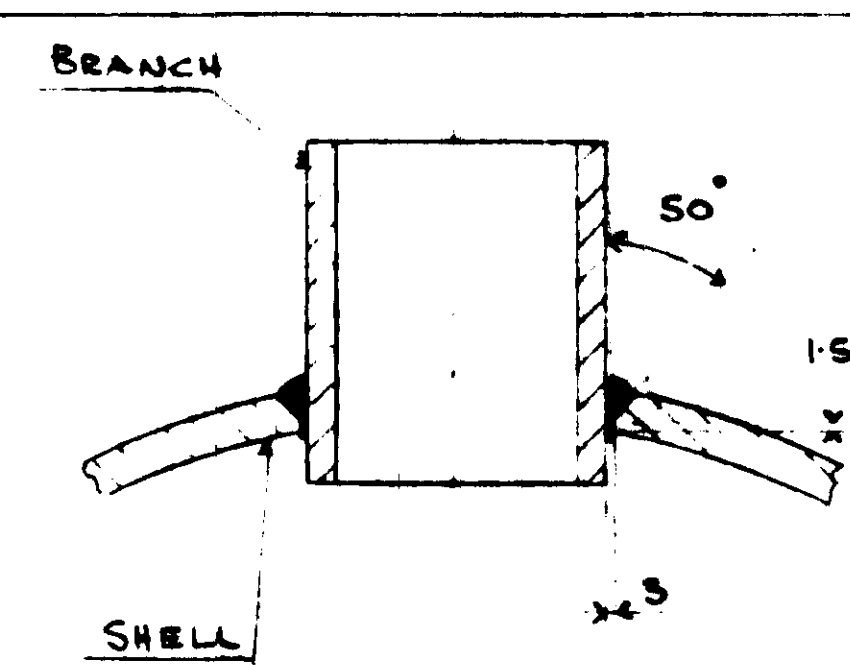
END VIEW



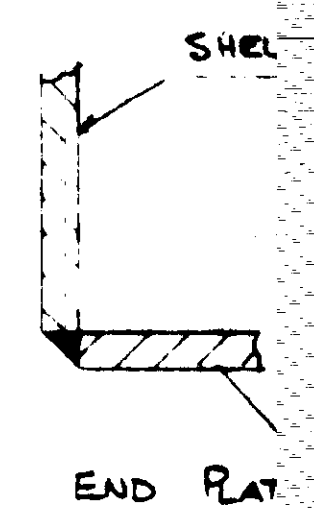
BUTT WELD



FLANGE WELD

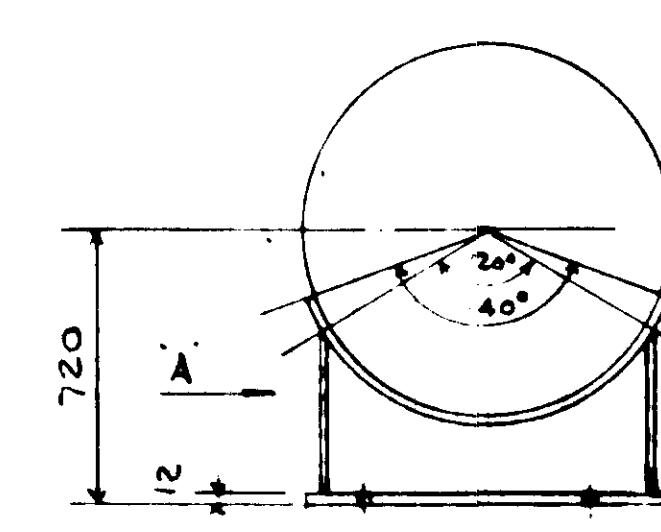
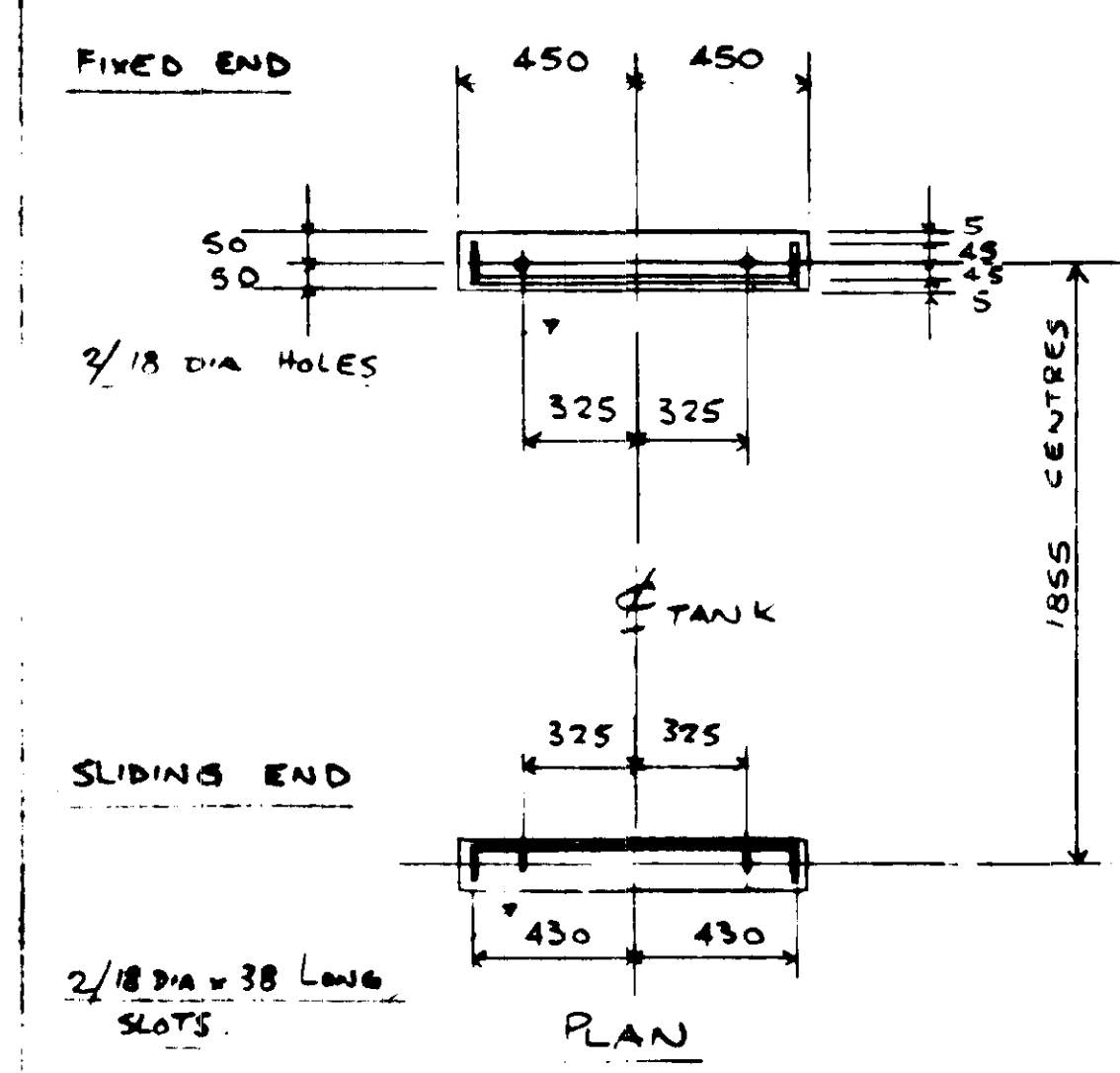


BRANCH WELD

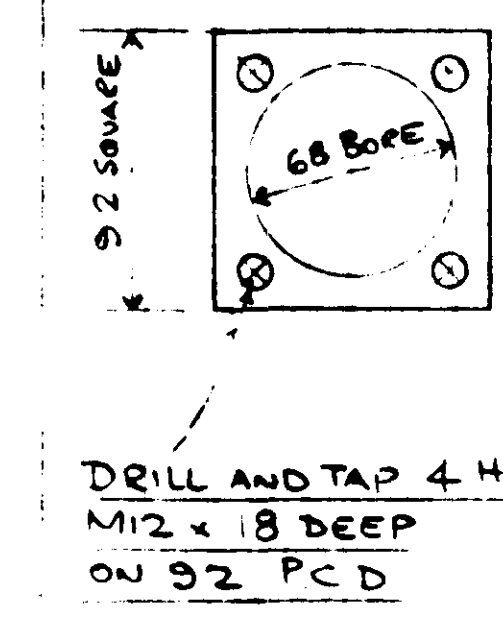


END PLATE WELD

WELDING DETAILS

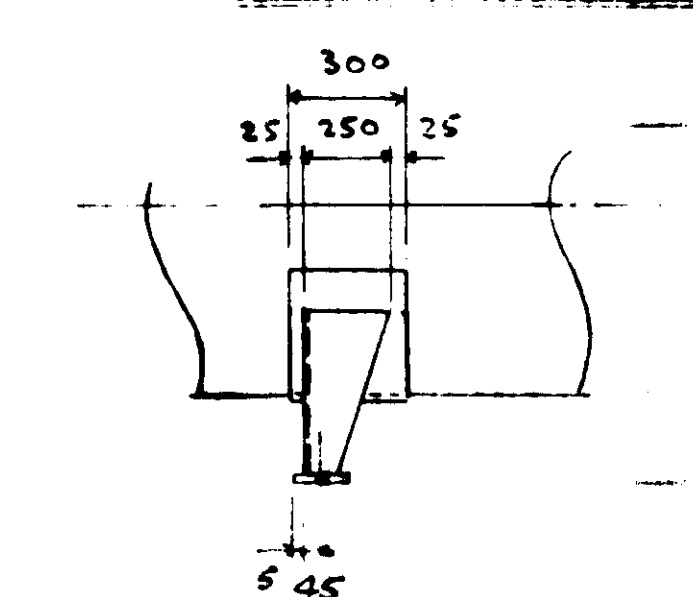


END VIEW



DRILL AND TAP 4 HOLES  
M12 x 18 DEEP  
ON 92 PCD

DETAIL OF PAD FOR LEVEL SWITCH  
WELDED TO END OF TANK GMM CONTINUOUS FIL  
300 x 6 THICK REINFORCING STRAP WELDED TO  
860 x 10 THICK WEB PLATE } SHAPED AS  
300 x 10 THICK FLANGE PLATE }  
100 x 12 THICK BASE PLATE x 900 LONG  
2/ MIG BOLTS + NUTS & WASHERS  
SADDLE MATERIAL (FOR ONE ON



VIEW ON ARROW A

TANK SADDLE DETAILS

DESIGN DATA  
1 WORKING PRESSURE: ATMOSPHERIC  
2 TEST PRESSURE:   
3 WORKING TEMP: AMBIENT  
4 DESIGN TEMP: AMBIENT  
5 CAPACITY: 2270 LITRES  
6 WELD METHOD: MANUAL ARC  
7 INSPECTION: JBE LTD  
FINISH: HOT DIPPED GALVANISED TO BS 729  
AFTER MANUFACTURE & TESTING

FILL WITH WATER (WITH  
0.5M STANDPIPE ON N3)  
ALLOW TO STAND 2 HRS  
CHECK FOR LEAKS BEFORE  
AND AFTER GALVANISING

REF	SIZE	DESCRIPTION	CONNECTION	SCH
1	80	MAKE-UP & BLIND FLANGE	BS 4504 PN10 RF	40
2	50	OUTLET & BLIND FLANGE	" " " "	40
3	80	VENT 9/16" SWAN NECK LENT	" " " "	40
4		LEVEL SWITCH PAD	AS DETAILED	
5	610	MANHOLE	AS DETAILED	
6	24	GAS GLASS	SCREENED B.S.P FEMALE	40
7	50	OUTLET (DRAINAGE FACILITY) & BLIND FLANGE FITTED FOR TANK	BS 4504 PN10 RF	40

HYDRO-ELECTRIC PETERHEAD GENERATING STATION		
CONTRACT NO. 2052600 / C01	DRAWING NO. 036 / 1328 / 7101	SHEET 01
<b>JOHN BROWN</b> John Brown Engineering Ltd Clydebank, Dunbartonshire		
J.B.E. ORDER NUMBER : 07 / 24500		
J.B.E. DRAWING NUMBER : 0998-7205-011		

REVISIONS		REVISION	
1	REVISED AS INDICATED A	DATE	07/24500
2	FOR CUSTOMER APPROVAL	LOCATION	PETERHEAD
NAME DATE CLIENT JOHN BROWN ENG.		GEA SPIRO-GILLS	
DRAWN JHM 20/01/01		SCALE 1:20	
CHECKED		GEA CONTRACT NUMBER 23050	
DETAIL OF HEADER TANK FOR GAS TURBINE UNIT		ORG No 33 99 20338	